

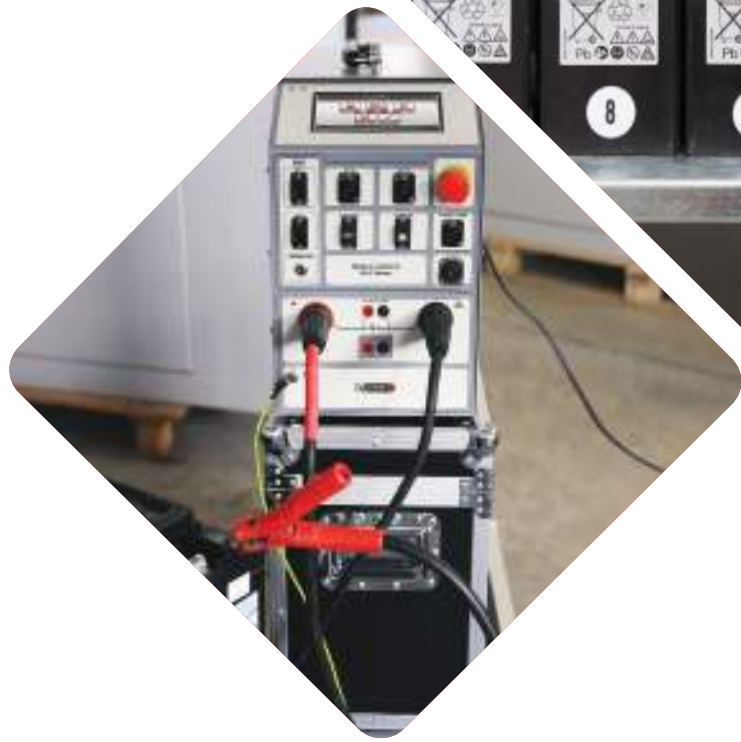
Product Catalog

Smart test devices for reliable electric power systems



Battery

Test Equipment



Content

About Us

The brand “DV Power”, with headquarters in Stockholm (Sweden), has since 2000 developed light and ingenious test solutions for transformers, circuit breakers, batteries and electrical safety.

The company was founded by a group of engineers with **extensive** knowledge and experience in the power electronics technology area.

Today, our DV Power products are sold all over the world – in over 110 countries.

We remain committed to extensive research and development. Thanks to our customers who continuously provide us with valuable feedback and diverse case studies, we are able to design even better products that meet their needs.

Our success is solely based on extensive research, development and fast commercial application.

The IBEKO Power AB company is certified according to ISO 9001:2015 and ISO 14001:2015 standards.

About Battery Test Equipment

Batteries are a crucial part of various power systems. Improper battery string may lead to endangerment of human lives as well as budget losses. Therefore, it is necessary for batteries to be inspected regularly to monitor their condition and maximize their lifetime.

DV Power has designed cutting-edge solutions for assessing the condition of any type of battery by performing capacity tests, measuring internal resistance, voltage, and temperature, and offering battery charging solutions.

Battery Chargers and Dischargers	4
BCD Series.....	4
Battery Load Units	6
BLU-D Series.....	6
BLU-C Series.....	7
BLU-A Series.....	11
BLU-T Series.....	13
Battery Extra Load Units	17
BXL Series.....	17
Battery Voltage Supervisors	19
BVS Series.....	19
Battery Voltage Recorder	21
BVR Series.....	21
Battery Chargers	22
BAC Series.....	22
Battery Resistance Tester	24
IBAR.....	24
Battery Ground Fault Detector	25
BGF Series.....	25
Micro-Ohmmeters	26
RMO-H Series.....	26

All specifications herein are valid at an ambient temperature of + 25 °C and standard accessories. Specifications are subject to change without notice.



Battery Chargers and Dischargers

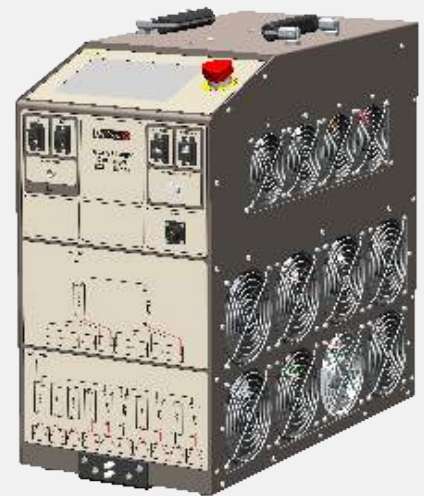
BCD Series

Applications

- Applicable for any battery type or technology
- Supports the needs of battery value chain segments, from manufacturing to end-of-life management
- Facilitates battery validation process at the end of the production line
- On-site acceptance testing and battery activation
- Management of stored batteries (warehouses, salvage yards)
- Compliance with transportation regulations
- After-sales maintenance and performance testing
- Assessment of second-life usage and preparation for recycling

Main features of BCD500T (BCD500T-N-01)

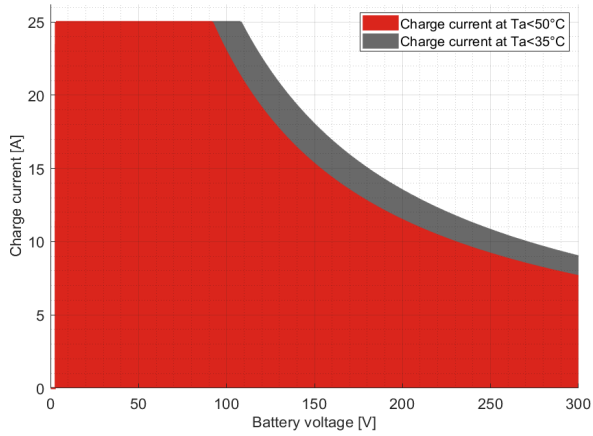
- Voltage range: 0 - 500 V
- Discharge power: up to 15 kW
- Charge power: up to 11 kW
- Enables discharging, charging, and cycling operations, facilitating advanced tasks such as battery testing (capacity and DCIR), SOC adjustment and calibration, as well as thermal management testing.
- Temperature-controlled operation: monitors ambient and cell temperatures
- Real-time monitoring of cell / intercell voltages on 7 in touch screen display
- USB, RS232, CAN, or Ethernet communication
- Dimensions: 590 mm x 280 mm x 600 mm (23.2 in x 11.0 in x 23.6 in)
- Weight: 39 kg (86 lbs)



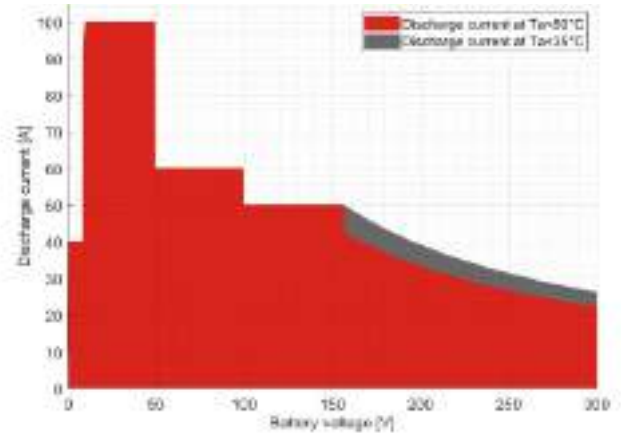
Model	BCD300M	BCD500T
Voltage range [V DC]	0 - 300	0 - 500
Discharge power [kW]	up to 7,8	up to 15
Maximum discharge current [A]	100	100
Discharge modes	Const I, Const R, Const P, Const U	
Charge power [kW]	up to 2,7	up to 11
Maximum charge current [A]	25	50
Charge modes	Const IU	
Display	7 in	
Power supply	90 V – 264 V AC, 50 / 60 Hz, single-phase	340 - 480 V AC, 50 / 60 Hz, three-phase
Dimensions [mm]	560 x 265 x 355	590 x 280 x 600
Weight [kg]	20	39

Battery Chargers and Dischargers

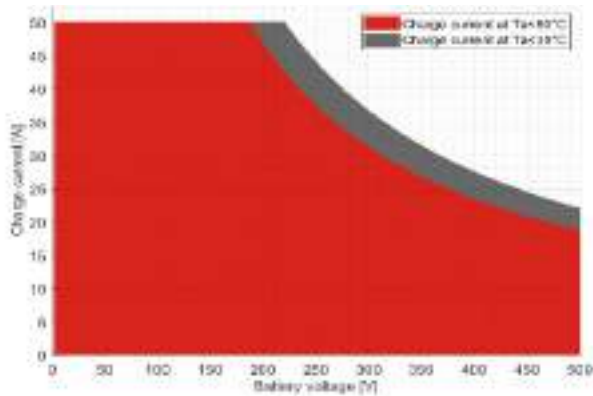
BCD300M maximum charge currents



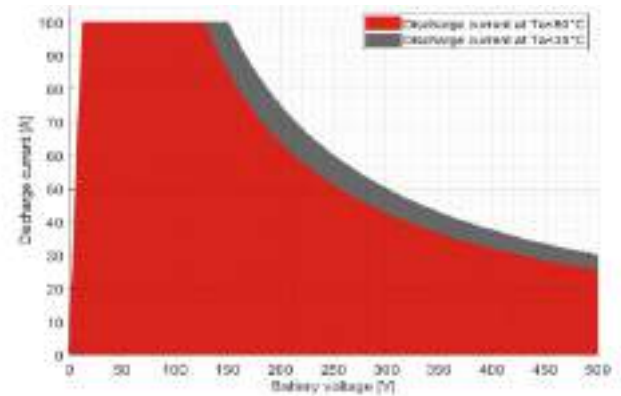
BCD300M maximum discharge currents



BCD500T maximum charge currents



BCD500T maximum discharge currents



Battery Load Units

BLU-D Series

Applications

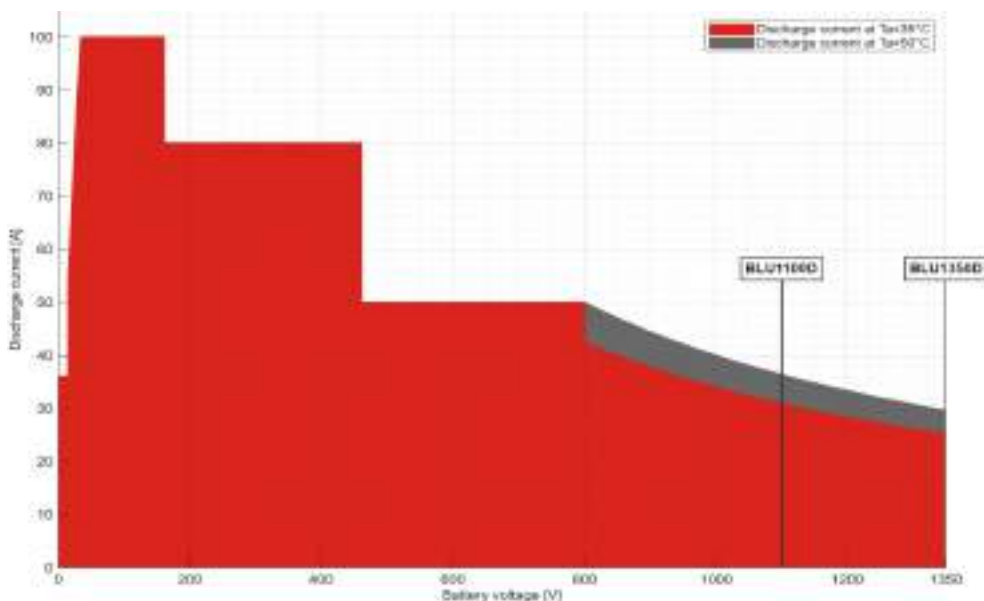
- Most universal load unit on the market (0 – 1 350 V DC)
- Deep battery discharge down to 0 V
- Efficiently suppress rebound voltage following deep discharge, with ZVD / BAR module*
- Discharge a battery before transport
- Monitor cell / intercell voltages during capacity / full discharge tests with BVS / BVS-4
- Provides temperature-controlled discharge process (by measuring ambient / cell temperatures)

Main Features of BLU1350D (BLU1350-D-01)

- Voltage range: **0 – 1 350 V DC**
- Discharge power: **up to 40 kW**
- Efficient full battery discharge (to 0 V) prior to recycling
- Temperature-controlled discharge process
- Li-ion battery discharge before transport
- Real-time test parameters monitoring on 7 in touch screen display
- USB, RS232 or Ethernet communication with PC
- Dimensions: 590 mm x 280 mm x 600 mm (23.2 in x 11 in x 23.6 in)
- Weight: 30 kg (66.1 lbs)



BLU1100D and BLU1350D maximum discharge currents



* Zero Voltage Discharge Module (ZVD) is a specially designed module enabling total battery discharge (down to 0 V) required prior to recycling. The system of BLU-D with ZVD module improves the discharge process by discharging the battery in 2 steps: Step 1: Efficient and controlled (current is constant down until 0 V is reached) discharge until the battery voltage drops to 0 V Step 2: ZVD short-circuits the battery to remove the remaining energy leading to total battery discharge

Battery Load Units

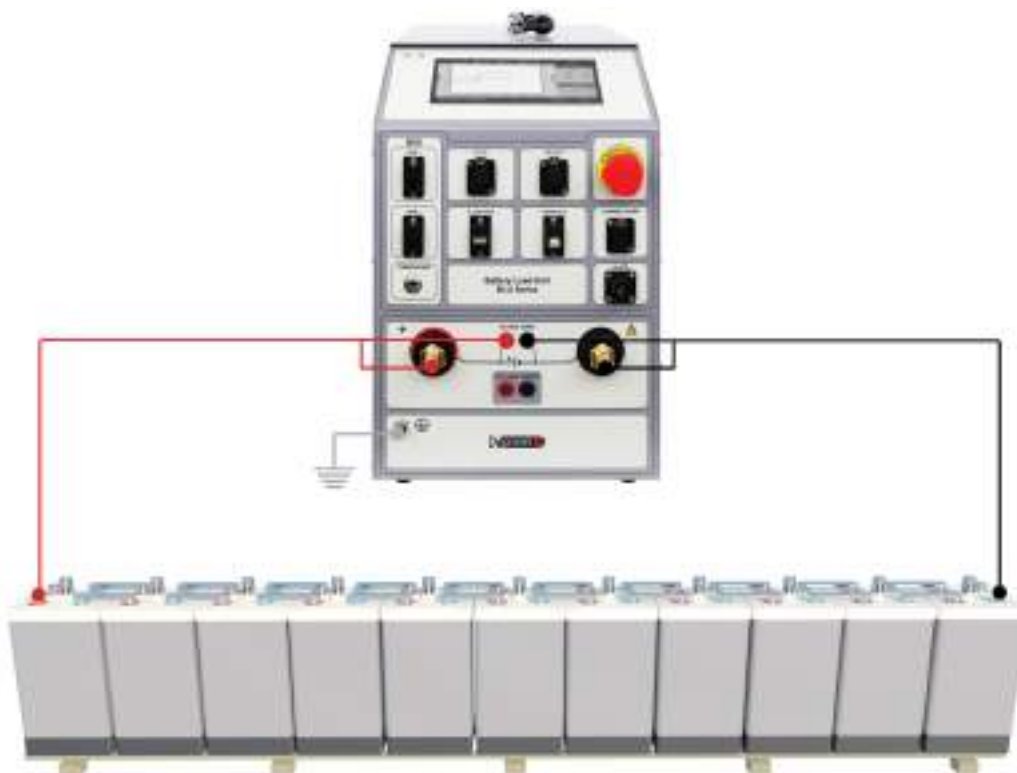
BLU-C Series

Applications

- Capacity testing of Lead-acid, Ni-based and Li-ion cells (up to 300 A / 42 kW)
- Applicable to 3 – 800 V DC battery systems
- Temperature-regulated capacity test for Li-ion cells
- Cell / intercell voltage monitoring on large 7-inch touch screen display with BVS / BVS-4
- Deep battery discharge down to 0 V
- Efficiently suppress rebound voltage following deep discharge, with ZVD / BAR module

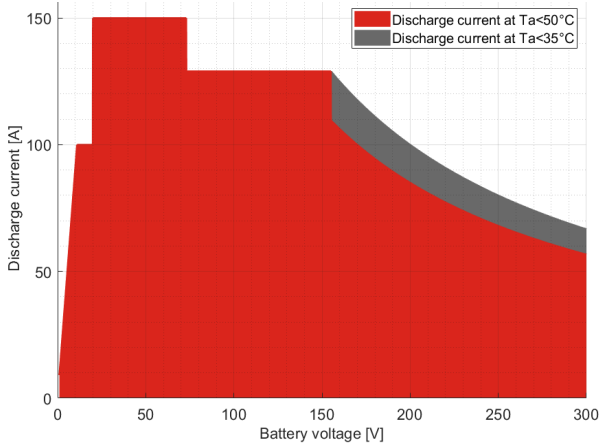
Main Features of BLU800C (BLU800C-N-01)

- Battery voltage range: 5,55 – 800 V DC
- Discharge power: up to 32 kW
- Discharge current: up to 100 A
- Cell monitoring system (BVS or BVS-4) fully controlled by BLU800C
- Automated battery, cell and intercell voltage measurement
- Testing batteries while in service
- Test resume (no data loss) in case of interrupted power supply
- Ambient temperature measurement channel
- Touch screen color display 7 in
- Dimensions: 520 mm x 260 mm x 436 mm (20.5 in x 10.2 in x 17.1 in)
- Weight: 20,8 kg (45.8 lbs)

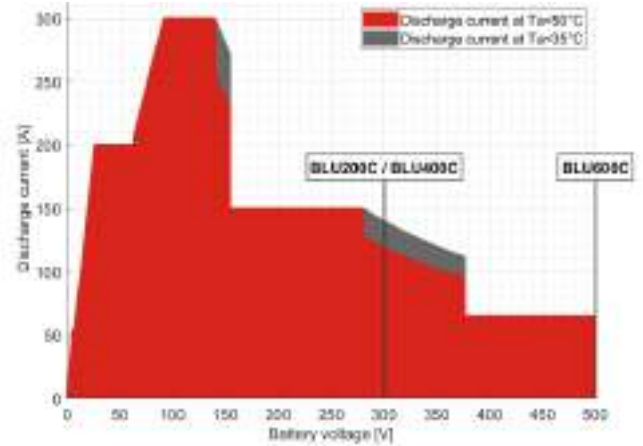


Battery Load Units

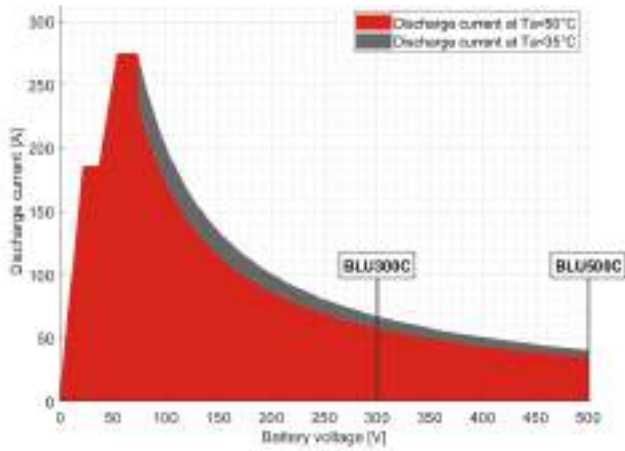
BLU100C
Maximum discharge currents



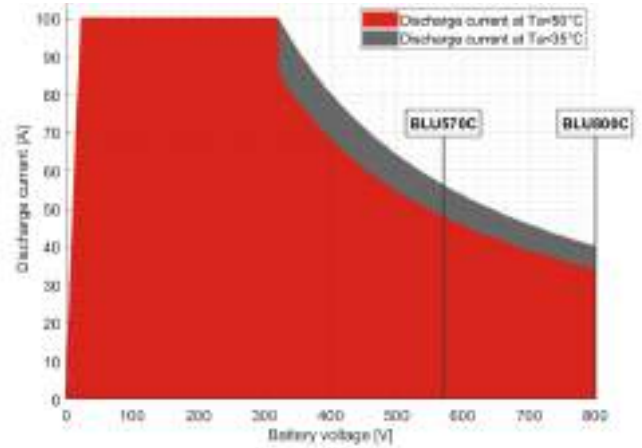
BLU200C, BLU400C and BLU600C
Maximum discharge currents



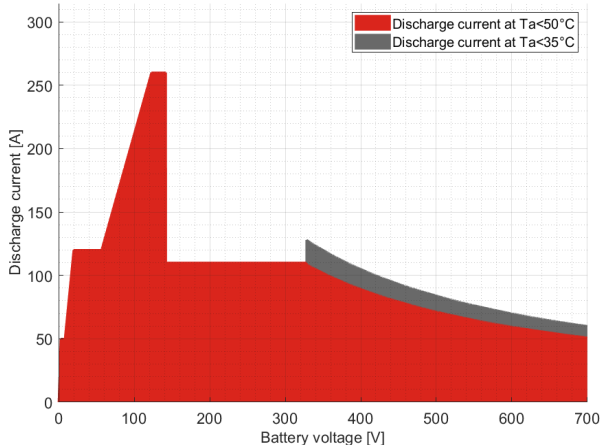
BLU300C and BLU500C
Maximum discharge currents



BLU570C and BLU800C
Maximum discharge currents



BLU700C
Maximum discharge currents



Battery Load Units

Battery voltage [V]		BLU100C	BLU200C	BLU300C	BLU400C	BLU500C	BLU600C	BLU700C	BLU700C	BLU800C
Min [V]	Max [V]	Maximum BLU-C discharge currents [A]*								
3	5	-	-	-	-	-	-	-	50	-
5	10	45	50	40	50	40	50	20	50	20
10	20	90	75	80	75	80	75	40	60	40
20	30	150	150	165	150	165	150	85	120	85
30	42	150	200	185	200	185	200	100	120	100
42	60	150	200	210	200	210	200	100	120	100
60	72	150	200	270	200	270	200	100	125	100
72	90	125	235	220	235	220	235	100	150	100
90	100	125	295	200	295	200	295	100	190	100
100	130	125	300	150	300	150	300	100	210	100
130	142	125	295	140	295	140	295	100	260	100
142	200	100	150	100	150	100	150	100	110	100
200	260	75	150	75	150	75	150	100	110	100
260	300	65	140	65	140	65	140	100	110	100
300	400	-	-	-	-	50	65	80	105	80
400	500	-	-	-	-	50	65	65	80	65
500	600	-	-	-	-	-	-	50	70	50
600	700	-	-	-	-	-	-	-	60	45
700	800	-	-	-	-	-	-	-	-	40
Weight [kg]		18,9	28,5	18,9	28,5	18,9	28,5	20,8	28,0	20,8

*The current values listed represent the maximum current maintainable throughout the entire corresponding voltage range in the table. For currents that each BLU can obtain, refer to the associated graph.



Battery Load Units

BLU-C Series Models Comparison

Model	BLU100C	BLU200C	BLU300C	BLU400C	BLU500C	BLU570C	BLU600C	BLU700C	BLU800C
Voltage range [V DC]	5,55* – 300	5,55* – 300	5,55* – 300	5,55* – 300	5,55* – 500	5,55* – 570	5,55* – 500	3* – 700	5,55* – 800
Max. current [A]	150	300	270	300	270	100	300	260	100
Max. power [kW]	20	42	20	42	20	30	42	42	32
Touch screen display [in]	7.0	7.0	7.0	7.0	7.0	7.0	7.0	7.0	7.0
BVS functionality**	No	No	Yes	Yes	Yes	Yes	Yes	Yes	Yes
Parallel operation feature	No	No	Yes	Yes	Yes	Yes	Yes	Yes	Yes
Dimensions [mm]	520 x 265 x 412	590 x 280 x 600	520 x 265 x 412	590 x 280 x 600	520 x 265 x 412	520 x 260 x 436	590 x 280 x 600	590 x 280 x 600	520 x 260 x 436
Weight [kg]	18,9	28,5	18,9	28,5	18,9	20,8	28,5	28	20,8

* Total battery discharge to 0 V possible, standalone or with ZVD

** Individual cell voltage monitoring feature

Accessories



Current cables with alligator clamps (A4) isolated



Current clamp 30 / 300 A power supplied from the instrument with adapter 5 m



Sense cables with alligator clamps



Thermal camera



Zero voltage discharge module



Battery active resistor



Transport case



Plastic cable case



Cable bag

Battery Load Units

BLU-A Series

Applications

- Capacity testing of Lead-acid, Ni-based and Li-ion cells (up to 240 A / 28,4 kW)
- Applicable to 3 – 500 V DC battery systems
- Testing single Li-ion cell
- Individual cell voltage and inter-cell connection monitoring capabilities with BVS / BVS-4
- Deep battery discharge down to 0 V
- Efficiently suppress rebound voltage following deep discharge, with ZVD / BAR module

Main Features of BLU200A (BLU200A-D-00)

- Battery voltage range: 5,55 – 300 V DC
- Discharge power: up to 19,7 kW
- Discharge current: up to 240 A
- New touch screen color display 5.7 in
- Testing batteries while in service
- Test resume (no data loss) in case of interrupted power supply
- Dimensions: 560 mm x 221 mm x 355 mm (22 in x 8.7 in x 14 in)
- Weight: 14,5 kg (32 lbs)

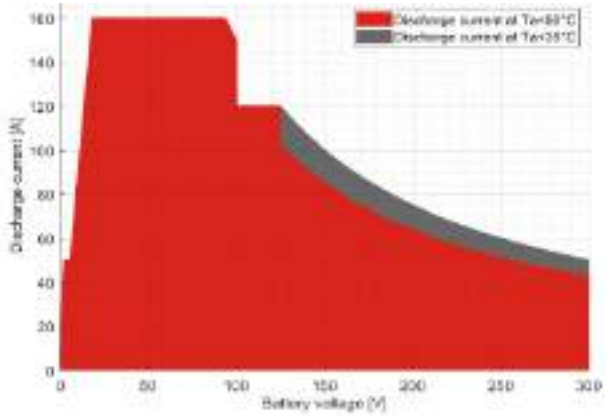


Model	BLU100L	BLU100A	BLU200A	BLU340A	BLU360V
Battery Nom. Voltage [V]	Maximum BLU-A discharge currents [A]*				
3-5	50	-	-	-	-
5-10	50	40	55	50	50
10-20	85	85	110	100	100
20-30	160	160	225	160	160
30-40	160	160	240	160	160
40-60	160	160	240	160	160
60-72	160	160	240	160	160
72-90	160	160	140	160	160
90-105	120	120	140	160	160
105-130	115	115	140	160	160
130-142	105	105	140	160	160
142-200	75	75	100	150	150
200-260	55	55	75	115	115
260-300	50	50	65	100	100
300-410	-	-	-	-	70
410-500	-	-	-	-	60
Weight [kg]	12,8	12,8	14,5	20,6	20,6
Max. Power [kW]	14,2	14,2	19,7	28,4	28,4

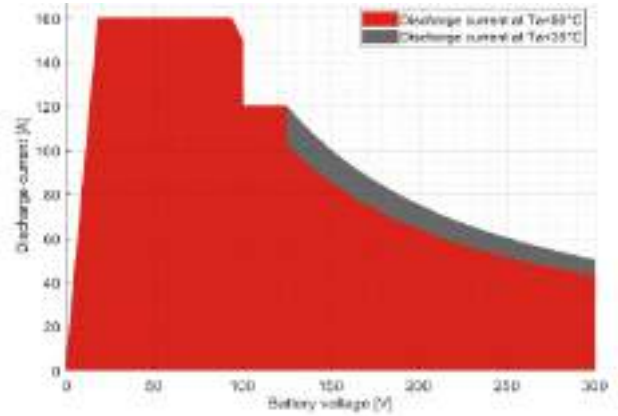
*The current values listed represent the maximum current maintainable throughout the entire corresponding voltage range in the table. For currents that each BLU can obtain, refer to the associated graph.

Battery Load Units

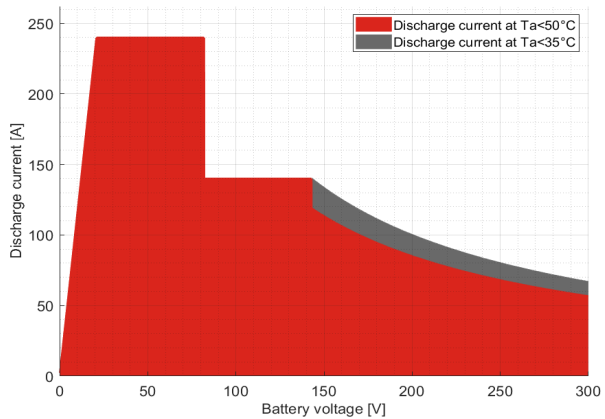
BLU100L maximum discharge currents



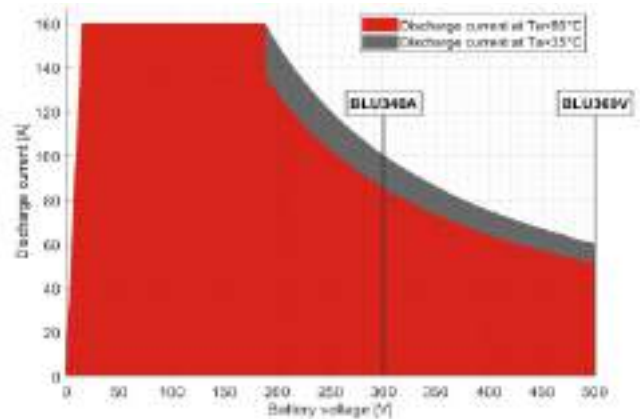
BLU100A maximum discharge currents



BLU200A maximum discharge currents



BLU340A and BLU360V maximum discharge currents



Battery Load Units

BLU-T Series

Applications

- Capacity testing of Lead-acid, Ni-based and Li-ion cells (up to 350 A / 19,2 kW)
- Applicable to 0,9 – 70,5 V DC battery systems
- Testing the battery while in service
- Individual cell voltage and inter-cell connection monitoring capabilities with BVS / BVS-4
- Deep battery discharge down to 0 V
- Efficiently suppress rebound voltage following deep discharge, with ZVD / BAR module

Main Features of BLU110T (BLU110T-D-00)

- Battery voltage range: 0,9 – 70,5 V DC
- Discharge power: up to 8,5 kW
- Discharge current: up to 150 A
- New touch screen color display 5.7 in
- **Testing single Lead-acid, Ni-based and Li-ion cells with 100 A**
- Testing batteries while in service
- Test resume (no data loss) in case of interrupted power supply
- Dimensions: 440 mm x 221 mm x 355 mm (17.3 in x 8.7 in x 14 in)
- Weight: 12,8 kg (28.2 lbs)



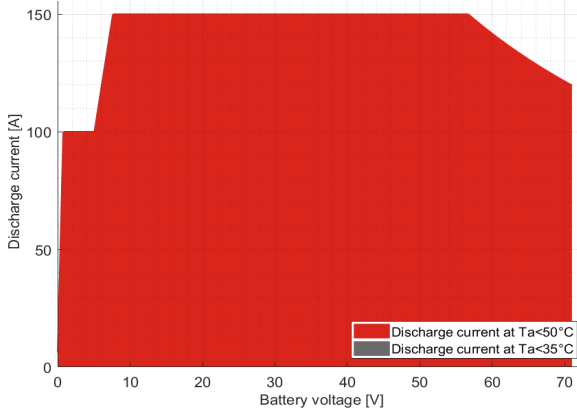
Model	BLU110T	BLU220T	BLU230T
Battery Nom. Voltage [V]	Maximum BLU-T discharge currents [A]*		
0,9-3	100	-	-
3-5	100	-	-
5-10	100	80	280**
10-20	150	165	280
20-30	150	330	280
30-40	150	350	-
40-60	140	330	-
60-72	120	270	-
Weight [kg]	12,8	20,6	15,1
Max. Power [kW]	8,5	19,2	8,4

*The current values listed represent the maximum current maintainable throughout the entire corresponding voltage range in the table. For currents that each BLU can obtain, refer to the associated graph.

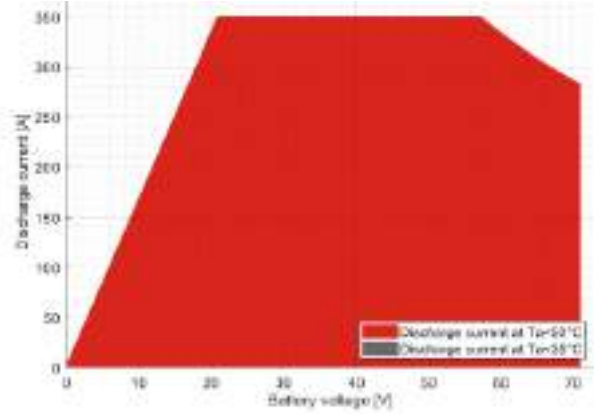
** BLU230T operating voltage range is 4,8 – 30 V

Battery Load Units

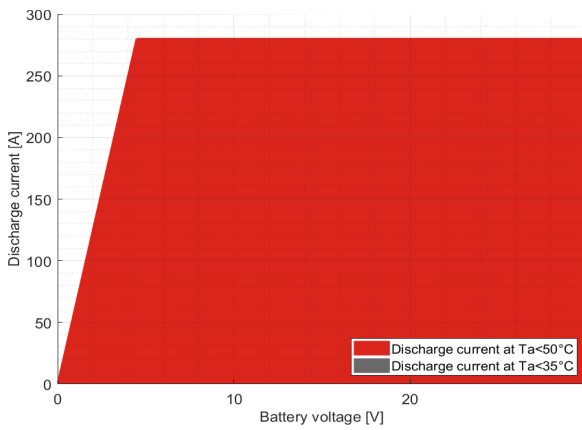
BLU110T maximum discharge currents



BLU220T maximum discharge currents



BLU230T maximum discharge currents



Battery Load Units

BLU-A Series Models Comparison



Model	BLU100L	BLU100A	BLU200A	BLU340A	BLU360V
Voltage range [V DC]	3*– 300	5,55* – 300	5,55* – 300	5,55* – 300	5,55* – 500
Max. current [A]	160	160	240	160	160
Max. power [kW]	14,2	14,2	19,7	28,4	28,4
Touch screen display [in]	5.7	5.7	5.7	5.7	5.7
Parallel operation feature	No	No	Yes	Yes	Yes
Dimensions [mm]	440 x 221 x 355	440 x 221 x 355	560 x 221 x 355	730 x 221 x 355	730 x 221 x 355
Weight [kg]	12,8	12,8	14,5	20,6	20,6

* Total battery discharge down to 0 V available with additional ZVD module

BLU-T Series Models Comparison



Model	BLU110T	BLU220T	BLU230T
Voltage range [V DC]	0,9*– 70,5	5,55* – 70,5	4,8* – 30
Max. current [A]	150	350	280
Max. power [kW]	8,5	19,2	8,4
Touch screen display [in]	5.7	5.7	5.7
Parallel operation feature	No	Yes	Yes
Dimensions [mm]	440 x 221 x 355	560 x 221 x 355	560 x 221 x 355
Weight [kg]	12,8	15,1	15,1

* Total battery discharge down to 0 V available with additional ZVD module

Battery Load Units

Accessories



Current cables with alligator clamps (A4) isolated



Extension current cables



Sense cables with alligator clamps



Current clamp 30 / 300 A power supplied from the instrument with adapter 5 m



Zero Voltage Discharge module



Battery active resistor



Cable bag



Plastic cable case

Battery Extra Load Units

BXL Series

Applications

- Support unit for battery capacity measurement
- Enables selecting higher discharge currents thus reducing test time

Main Features of BXL-V (BXL400X-V-00)

- Battery voltage range: 5,25 – 500 V DC
- Discharge power: up to 32,4 kW
- Discharge current: up to 260 A
- Used in a system with BLU to increase load capacity
- Testing batteries while in service
- Discharge process controlled by BLU unit
- Operation mode – Constant R
- User-selectable resistance values
- Compatible with any battery load unit on the market



Voltage [V]		BXL-A		BXL-T		BXL-V	
Min [V]	Max [V]	Maximum BXL discharge currents [A]					
5	10	55	110	55	115	15	35
10	20	85	175	115	235	35	70
20	30	175	265	235	350	70	110
30	42	130	180	170	240	110	150
42	60	180	260	240	340	150	220
60	72	90	110	215	250	220	260
72	90	110	140	-	-	95	120
90	100	140	155	-	-	120	135
100	130	120	160	-	-	135	175
130	142	160	175	-	-	175	195
142	200	55	80	-	-	30	45
200	260	60	80	-	-	45	60
260	300	80	90	-	-	40	45
300	400	-	-	-	-	45	60
400	500	-	-	-	-	60	75

Battery Extra Load Units

Accessories



Current cables with alligator clamps (A4) isolated

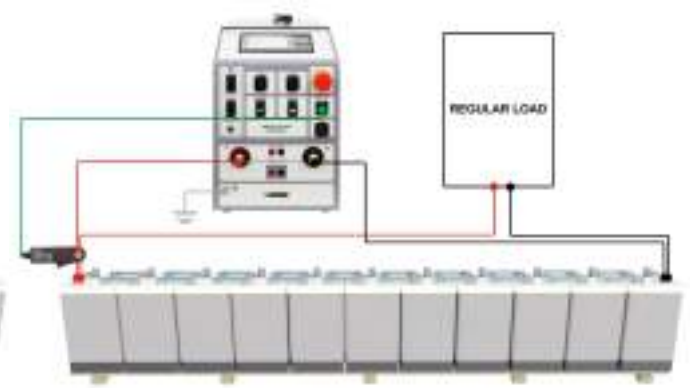
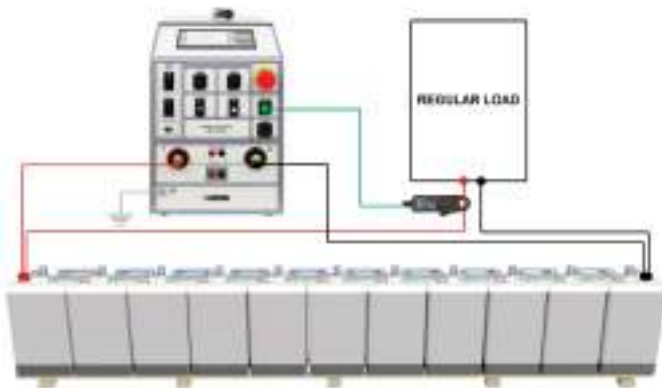


Extension current cables



Cable bag

Connecting BLU-C and BXL to test object (load current mode) Connecting BLU-C and BXL to test object (battery current mode)



Battery Voltage Supervisors

BVS Series

Applications

- Automated cell voltage measurement
- String voltage and current monitoring using additional modules
- Monitors cells during capacity testing performed with any load bank on the market
- Monitors cells during charging

Main Features of BVS / BVS-4 (BVS4-CUNN-00)

- Automated string and cell voltage, inter-cell connection voltage, string current and ambient temperature measurement during capacity test
- Can be used with different load banks using additional string voltage and string current module
- Reliable and easy to operate
- Dimension: 206 mm x 180 mm x 64 mm (8.11 in x 7.08 in x 2.51 in) (Control unit)
- Dimensions: 66 mm x 28 mm x 139 mm (2.6 in x 1.1 in x 5.5 in) (CVM / CVM-4)
- Weight: 0,78 kg (1.7 lbs) (Control unit)
- Weight: 0,14 kg (0.3 lbs) (CVM / CVM-4)



● - Standard ○ - Optional

Series	BVS	BVS-4
Cell Voltage Modules	CVM	CVM-4
No. of Measured Cells	1 module measures 1 cell (or block of cells up to 30 V)	1 module measures 4 cells (or blocks of cells up to 30 V)
Cell Voltage	●	●
Inter-cell Connection Voltage	●	
Ambient Temperature	●	●
String Voltage	○	○
String Current	○	○
Cell Temperature	○	○
Cell Temperature Measurement	1 temperature channel per cell	1 temperature channel per 4 cells
Data Transfer (Bluetooth, USB Cable to PC)	●	●
Data Sampling Interval	1 s max. (depends on no. of CVM)	1 s max. (depends on no. of CVM-4)

Battery Voltage Supervisor

Connection diagram BLU500C* and BVS-4



* A separate control unit (BVS-CU) is required for the BLU-A and BLU-T series, as well as for the BLU100C and BLU200C devices. All other models in the BLU-C and BLU-D series come with an integrated BVS Control Unit, removing the need for an external BVS-CU.

Accessories



Control unit



CVM



CVM-4



Voltage sense cables for CVM with banana plugs + alligator clips



Voltage sense cables for CVM-4 with banana plugs + dolphin clips



Communication cable



Cable bag



Plastic transport case for BVS CU and CVM



Plastic transport case for CVM

Battery Voltage Recorder

BVR Series

Applications

- Cell / String voltage measurement
- Efficient support tool during battery capacity measurement
- Monthly inspections of large battery banks
- Detection of failing cells

Main Features of BVR22 (BVR22X-NN-00)

- Voltage measurement range: ± 600 V
- Inter-cell connection voltage measurement range: $\pm 1\,000$ mV
- Cell and ambient temperature measurements
- Current measurement using current clamps
- U + I mode for simultaneous measurement of string voltage and current during capacity test
- Automatically measures, time-stamps and stores cell / string (float) voltages
- Bluetooth communication with external density meter
- Easy transfer of measured data to DV-B Win software (via Bluetooth or USB cable) for further analysis
- Dimensions: 223 mm x 116 mm x 53 mm (8.77 in x 4.56 in x 2.1 in)
- Weight: 0,7 kg (1.5 lbs)



Accessories



Sense cables with test probes



Sense cables with angled pins



Sense cables with banana plugs + dolphin clips



Transport bag

Battery Chargers

BAC Series

Applications

- Charging battery strings with voltages from 1 V DC up to 300 V DC
- Charging single Lead-acid, Ni-based and Li-ion cells

Main Features of BAC25A (BAC25A-NN-02)

- Charging voltage: 1 – 300 V DC
- Maximum charging current: 25 A
- Maximum charging power: 2,7 kW
- Two charging modes available
 - IU – constant current + constant voltage
 - UU – constant voltage + constant voltage
- Temperature compensation of output voltage



Mains Voltage [V AC]	Nominal Battery Voltage [V DC]	Maximum Current [A DC]	
		BAC25A	BAC50L
230 / 115	1,2	-	50
	2	-	50
	6	-	50
	12	25	50
	24	25	50
	48	25	30 20*
	60	25	-
	110 / 120	20 10*	-
	220 / 240	10 5*	-

* Maximum currents at 115 V Mains voltage

Battery Chargers

Accessories



Current cables with alligator clamps (A2) isolated



Sense cables with banana and dolphin clips

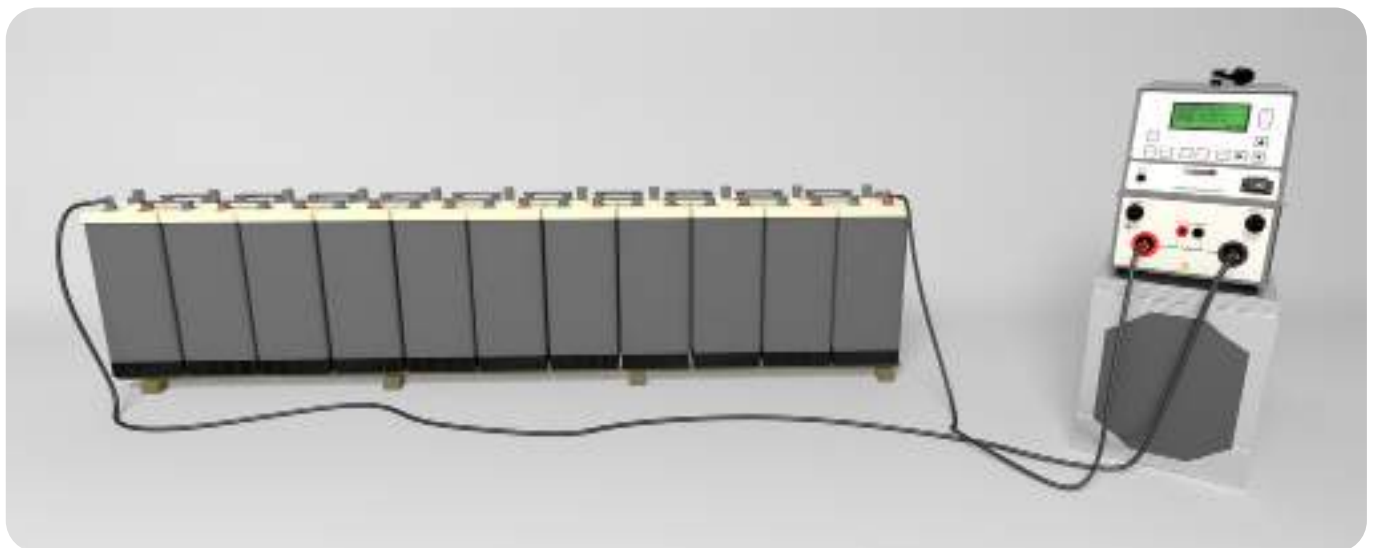


Transport bag for instruments in metal housing



Cable bag

Charging battery string with BAC Series



Battery Resistance Tester

IBAR Series

Applications

- Tests flooded Lead acid, VRLA, Ni-Cd, and Li-ion batteries and strings
- Determines the health of stationary batteries by performing measurements of internal resistance, voltage and intercell connection resistance
- Ideal test tool for maintenance, troubleshooting and performance testing of individual stationary batteries
- Offline testing of batteries that are disconnected from the load and the charger

Main Features of IBAR (IBARXX-NN-00)

- Battery resistance measurement range: 0 - 5 Ω
- Voltage measurement range: ± 60 V
- Handheld and lightweight device
- Quickly records and stores internal resistance, float voltage, and inter-cell connection resistance
- Automatic detection of resistance range with Autorange mode
- Pass / Warning / Fail indication during testing based on set parameters
- Includes DV-B Win for detailed test results analysis
- Dimensions: 223 mm x 98 mm x 46 mm (8.77 in x 3.85 in x 1.81 in)
- Weight: 0,5 kg (1.1 lbs)



Accessories



Plastic transport case



IBAR Test lead set



IBAR Test Lead set with angled pins



Zero Calibration Board

Battery Ground Fault Detector

BGF Series

Applications

- Detection of unacceptable contact of the battery's energized conductor with metal / chassis
- Reliable detection and localization of cell-to-ground short-circuit
- Enhances safety of battery discharging in maintenance and end-of-life
- Insulation failure detection of batteries
- Alarms when the ground fault is detected

Main Features of BGF (BGF100-NN-00)

- Max voltage measurement range: ± 600 V DC
- Handheld and simple to use (1-click to test)
- Automatically measures, time stamps, and stores results
- Easy transfer of measured data to software
- Bluetooth communication with PC
- Dimensions: 223 mm x 116 mm x 50 mm (8.77 in x 4.56 in x 2.1 in)
- Weight: 0,7 kg (1.5 lbs)



Accessories



Sense cables 2 x 10 m with banana plugs



Dolphin clip (red and black)



Grounding cable set 1 x 5 m with dolphin clip



Sense cables with test probe



Transport bag



Power supply adapter

Micro-Ohmmeters

RMO-H Series

Applications

- Measurement of low-resistance connections: inter-cell connections, welds, and busbars as part of battery installation and maintenance practices
- Resistance measurement according to IEC 62271-1

Main Features of RMO-H Series (RMOH300-N-00)

- Test currents: 1 A – 300 A DC
- Typical accuracy: $\pm (0,1\% \text{ rdg} + 0,1\% \text{ F.S.})$
- High-capacity Li-Po battery: 8 800 mAh, up to 4,2 V DC
- Measuring range: $0,1 \mu\Omega - 3\,000 \text{ m}\Omega$
- 10 000 test results storage
- Dimensions: 198 mm x 255 mm x 380 mm (8.9 in x 4.5 in x 1.9 in)
- Weight: 0,95 kg (2.1 lbs)



Model	RMO-H1	RMO-H2	RMO-H3
Maximum Test Current [A]	100	200	300
Continuous Test	No	No	No
R _{max} (Pass / Fail) feature	Yes	Yes	Yes
Cables length [m]	1,3	1,3	1,3
Output voltage [V]	4,2	4,2	4,2

Micro-Ohmmeters

Accessories



Current and sense cables 2 x 5 m with Kelvin probes with extended measuring tip (12 cm)



Power supply adapter



Test shunt 150 A / 150 mV



Test shunt 250 A / 60 mV



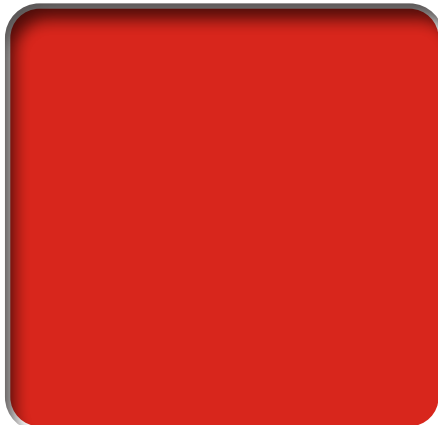
Grounding cable



Cable bag



Plastic cable case



Postal Address

IBEKO Power AB
Lejonstigen 9
181 32 Lidingö
Sweden

DV Power Inc. (US office)

311 Altamonte Commerce Blvd, Unit 1618
Altamonte Springs, FL 32714
USA

E-mail

sales@dv-power.com
support@dv-power.com
USAsupport@dv-power.com

Support Contact

Local Support (Scandinavia)
+46 8 731 78 24

Germany
+49 175 101 01 78

Asia, Africa, Australia, Europe and
Middle East Support
+46 70 092 50 00

Latin America Support
+46 70 009 21 46

USA and Canada (Toll Free number)
+1 800 599 8113

DV Power Inc. (US office)
+1 407 714 1722

WhatsApp
+46 70 092 50 00

