

Exciting TEST Products for the  
US Power Industry, from.....

**ProG USA LLC**

**MV,HV,EHV CIRCUIT BREAKER Testing** for Timing & Travel, Micro-ohms for contacts ("Ductor") and bus joints. Now with dynamic resistance and First trip ability. CB Coil testing and CB power for commissioning



**LIGHTWEIGHT** Portable **micro-ohmmeters**, TRUE ripple-free DC, Lightweight cables, 100A to 800A versions. RMO-200G most popular in US. Both Sides Grounded safety feature! New 300A version for US standard **Ground Grid integrity** test.

**DV/power**

Test CB's when no DC available. Power Supply for CB Coil Testing for low DC Volt operability and CB commissioning. POB40AD. SAT40A also Measures coil resistance and interfaces with CAT software for flexible situation testing.



**New RMO-H22** low cost (<\$7K) **handheld micro-ohmmeter**. Up to 300 AMPS TRUE DC, ripple free current. Battery powered. Uses hi-energy Li-Po technology, weighs 2 lbs. Leads up to 33ft.

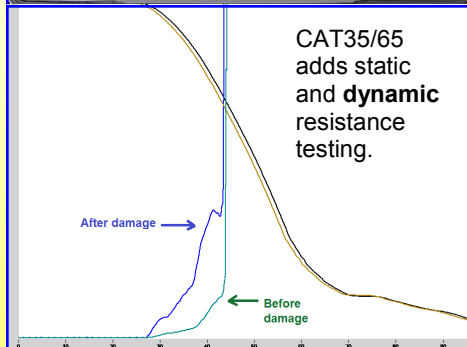
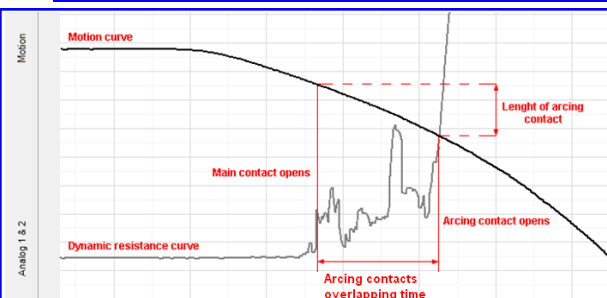


CAT series of low cost **Breaker timing/motion analyzers**. 3, 6 or 12 timing ch. Many models under \$12K.

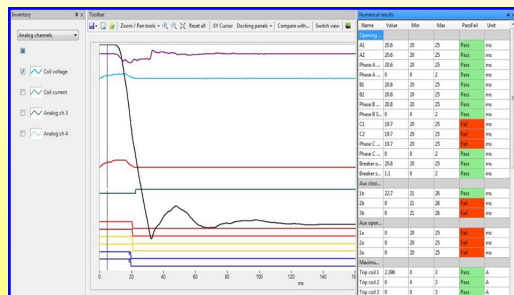
CAT hi-performance series add **DRM** ability and higher channel count. Both **Sides Grounded** test option. Built-in 200A Micro-ohmmeter on some models. Pre-insertion resistor (PIR) measure and graph.

**Free PC software and free upgrades.**

DV Power advances **portable test for CB's**. CAT-H handheld 3ph CB timer w coil control built-in, **off-line test**. CAT-P model adds First Trip **on-line test**. Both lightweight with clear useful displays and archiving PC software. DV-Win.



CAT35/65 adds static and dynamic resistance testing.



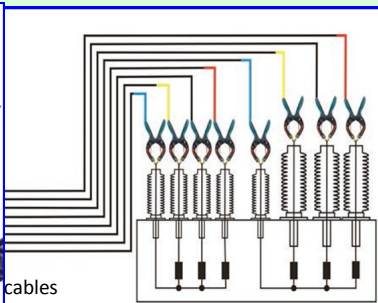
Sample of full timing/motion capture with pass/fail limits. Save as pdf, .xlsx, or .docx

**All DV Power products carry a 3 year warranty and are serviced in Florida**

# POWER TRANSFORMER TEST EQUIPMENT



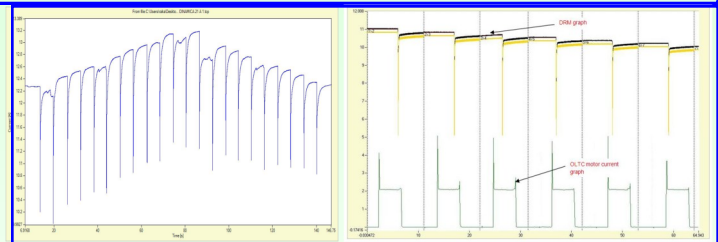
same cables  
can be used



DV Power's newest Diagnostic tester (**TWA-400**) for 3 phase fast **winding resistance** test, 7" display, inter-active graphic **dynamic OLTC test** (aka **LTC-DRM**) and **Auto-Demag** function. TRUE 3 phase source for convenient and simultaneous H and L side testing, an industry first!!! Same leads can be used for TRT63A or TRT400 for true 3 phase TTR measurements on same transformer. New **auto-tap-step** feature! Lower cost model **TWA-25A** available as best six phase Winding Resistance Tester in US market. One climb for connection to all six phases. Effective, safe **De-Mag** included.



Transformer **TTR** for **true 3 phase** turns ratio testing. Fully automatic, measures turns ratio, phase shift, excitation current and **auto-detects vector groups** to verify nameplate vs windings. Three phase generate and three phase measure. PC software incl. Displays accurate phase readings, other TTR's cannot. Same cable set as TWA-400 for convenient 3 phase testing. TRT400 has 1, 8, 40, 100, 250, 430 VAC ranges for CT thru to largest power transformers. **Auto-tap-step** control/measure thru OLTC taps lets PC do the work.



TRT500  
w 10"  
display,  
500VAC



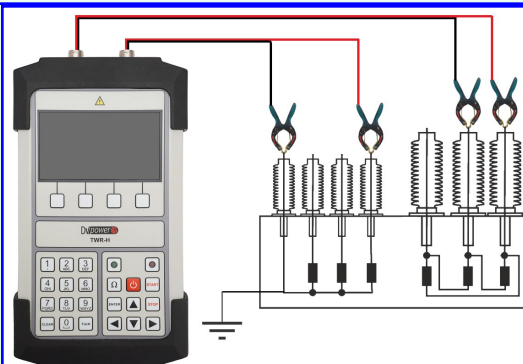
TWA500  
w 10"  
display,  
no PC  
req'd



Transformer **Winding Resistance** Tester (RMO-60TD) up to 60A and 60V of drive for fast testing of even largest power transformers. 60TD includes effective **single phase (LTC-DRM) dynamic graphic timing and resistance of OLTC's and regulators** and built-in **Tap Changer** control. Includes safe **Auto-DeMag** feature plus std auto-discharge and new auto-tap-step for easy OLTC test. PC software is no extra charge.

New! **Combo** winding resistance, turns ratio, polarity, excitation current tests in one box. Model **TWR-B** on left below is 3ph version with one time connection to 3ph transformer. ACV to 250V, DCV to 50V, DC to 25A. All tests performed automatically as a sequence. Auto control of Tap Changing for lo-res OLTC-DRM. Built-in battery... Auto **Demag** function.

Model **TWR-H** on right below unique handheld instrument. Measures turns ratio, winding resistance of a single phase then does demagnetization. TRT up to 40VAC. WRT with 10A for LV side and 2A for HV side



(DEM-60R) Stand-alone 3 phase Auto-matic One -Touch **De-Magnetizer** for any size Power Transformers. **SAFE. SIMPLE.** Auto-step-down method ensures full de-mag. Measures core flux (*new!*).



## ProG USA LLC

TEL: 407 332 8678 INFO@PROGUSA.NET BROCHURES AND TECHNICAL PAPERS ON WWW.PROGUSA.NET

HQ + Tech Center: Orlando, FL.



## SF6 gas Quality Testing



RH 973-SF6 analyzer or SF6 purity and **ultra-accurate** dewpoint (moisture content) via chilled mirror technology, plus SO2 plus convenient **recovery and pumpback of test sample**. Minimizes user frustration getting stable, repeatable readings which can save the sf6 gas owner big money. AC or batt. Universal and custom **fittings kits** available for testing or filling. **Supported 100% by RH in Arizona**

**Adapter kits**  
for RH and others



## SF6 gas recovery, filling and drying



Enervac's **GRU-7** and **-8** are SF6 gas carts for recovery rates of 28 kg (62 lb.) 17cu.m. / hr & 40cu.m. / hr and are suitable for vacuum recovery, filling and drying of gas for up to **115KV and above** breakers. Particle removal filters included. Model **736A** for **maximum** Sf6 cart performance up to 500KV use. Modern graphic HMI and flexible on-board storage and trailers.

GRU-4



**EnerDry for Transformer oil**, is a **temporary** cost-effective solution to reduce moisture in power transformers while a full re-build or replacement is planned.

- Removes moisture from transformer oil and insulation.
- Maintains low moisture levels in transformer oils in service.
- Able to dry transformers not braced for vacuum.
- Safety system – isolates itself in case of alarm or power failure.
- No paper filters utilized.

Runs at 2.3 gpm to eliminate any turbulent flow into the transformer. Can reduce 100ppm moisture down to 10ppm and maintain that level unattended, plus does fine filtration to 1 micron. The maximum continuous purification capacity shall be 135 gph - **EnerDry 150**. Optional high flow package: 270 gph - **EnerDry 300**



## TRANSFORMER OIL DE-GASSING & DRYING



Enervac model EHV4000 (1050 GPH ) oil purification processor shown in a dual axle cargo trailer.

Mini-dehydrator / degas oil up to 60 GPH. Priced under \$17K.



Wide range of std and custom transformer insulating **oil de-gassing & drying** systems. Uses high vacuum process to reduce water to less than 10ppm. Also modern **regen** systems get oil to better than virgin oil.

# Exciting TEST Products for the US Power Industry !

## BATTERY BANK Testing

TEST those substation battery banks without damaging them! Simple voltage monitor with constant current load-test competency, via discharge testing with auto-scanning. BE ready for NERC and ensure that last line of defense, "DC" for control, is still intact. Flooded, VRLA, NiCad or Li ION applications.



DV Power **DC loads** BLU and BLU-T series 0.9 -500 VDC, over 42 KW input on some models. Settable limits for low volt level, A-H accumulated or time expiry. Graph report.<32 lbs. aka 'capacity test'

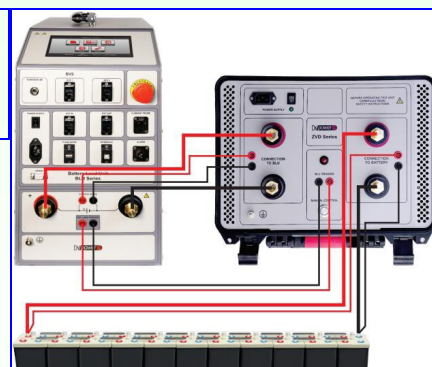
BAC25, DC **Battery Charger** to augment the permanent battery charger to speed up bank recharge times and reduce wait time to full back-up energy..



New ZVD-80 for full discharge to 0V then shorted, for **Battery recycling**.

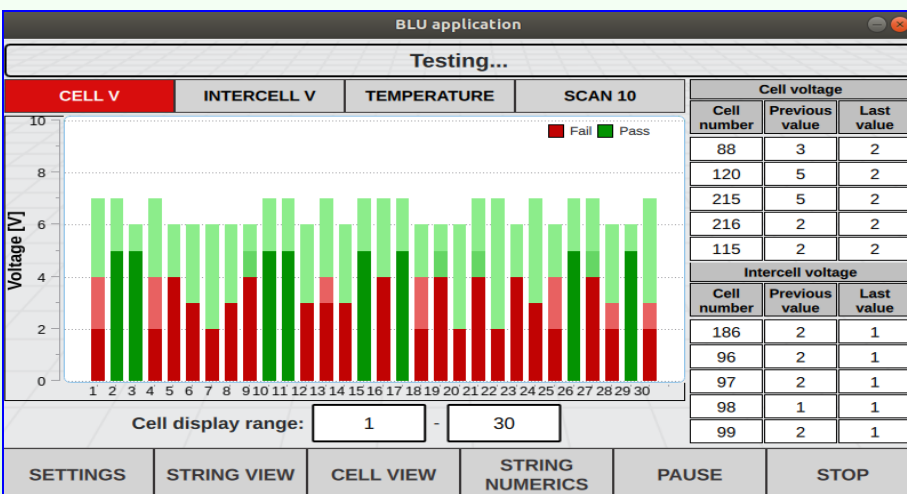
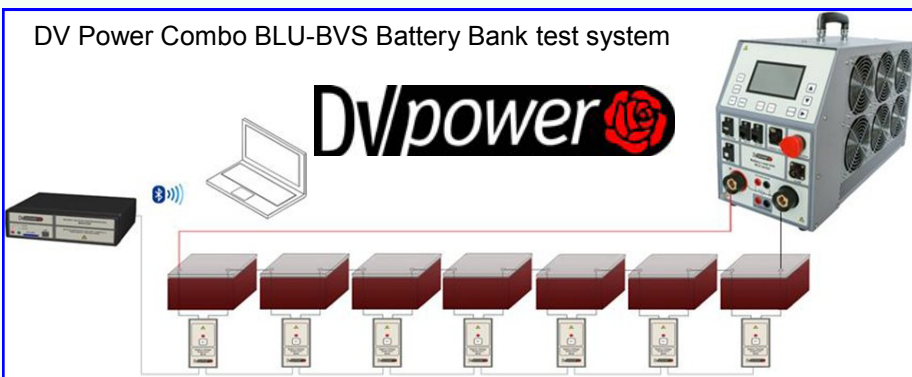


DV Power's BVR-20 for manual cell by cell testing, Use as routine bank **voltage test** or alongside BLU during capacity test to identify the weak cells.



BVS **cell by cell scanner** system can be used with DV Power BLU loads or as stand alone monitor or with other suppliers loads. New firmware permits proper analysis of even NiCad energy dissipation. **New quad** cell modules reduce cost by over 35% and reduces cabling.

DV Power Combo BLU-BVS Battery Bank test system



**Advanced** BLU C series of electronic DC loads. Large 7" display, option to drain battery down to 0V prior to recycling w ZVD-80 accessory. 'No crouch' form factor. Integral cell by cell scanner control, no PC required. Models up to 1000VDC and 42KW. Under 46Lbs.

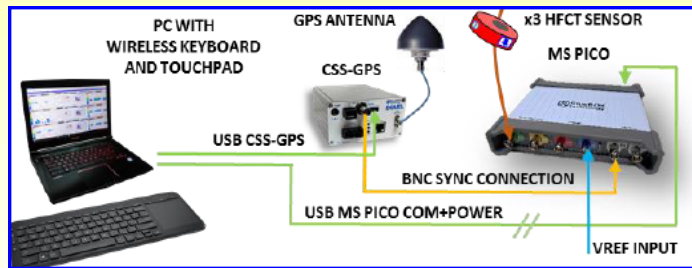
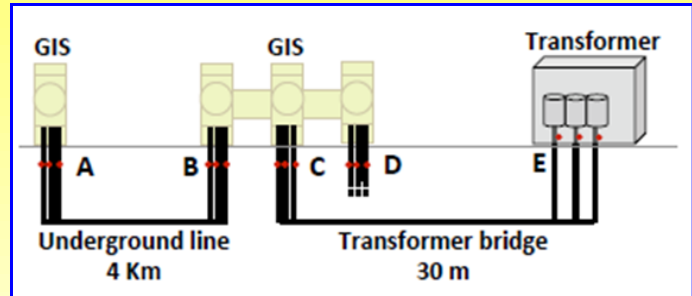




# SUBSTATION RELIABILITY, Cable PD, Ground Grid, CT/PT



Effective **PD monitoring and test key**, is the patented noise reduction software by **Ampacimon**. 3D clustering simplifies PRPD analysis from 3 different sensor types at the same time permit accurate verification of PD in transformers, vs false alarms and chasing noise. HF(HFCT)-UHF (TEV)-UHF(antenna) sensors by **Ampacimon**. Automatic PD mapping does fault location within HV underground cables, with HF sensors and GPS. Systems available for temporary test, short term monitoring, long term monitoring and on line analysis. (aka Blue Box Technology by DIAEL)



**Ampacimon's MS-Pico** model is useful for PD location in HV **underground cables** as a spot test or short term monitor. One test setup as above at either end of up to a 5 mile long cable can locate PD quite accurately. Starts, \$18K.



## CVT500 CT/PT/CVT test set, new for 2023!

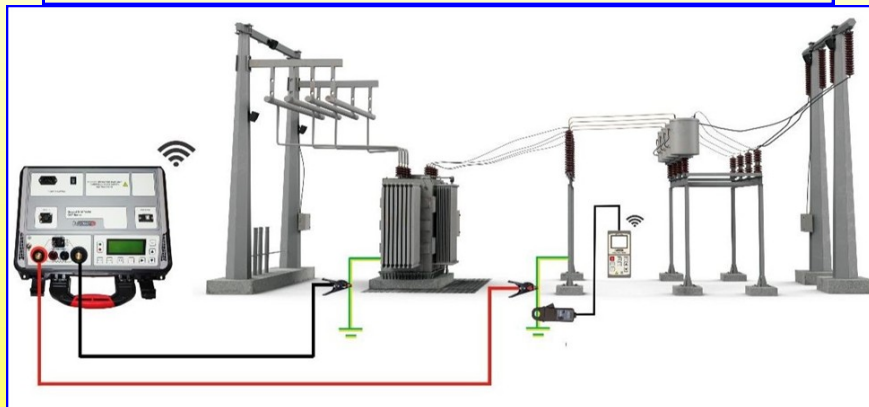
Multi-tap (up to 5 taps) CT tester with built-in tap interface. Up to 2KV output to secondary of CT.

Turns ratio, polarity, excitation current, phase angle and auto CT knee point (IEEE 30 deg. and 45 Deg.)

Winding resistance (up to 6A DC), insulation resistance, Burden w ACV or ACI, Demagnetization when all tests done.

Auto tests sequence and Flexible test reports and free PC software.

Test **substation GROUND GRID integrity** with this specially modified 300AMP micro-ohmmeter. DV Power model **GGT300** was developed in conjunction with a USA utility to provide portable, rugged test set to follow this accepted effective procedure. Finds defective grid points due to corrosion, vibration, bad cable welds, loose clamps or poor apparatus ground connection leads. GGT200 also available. One or two operator versions.



## Exciting TEST Products for the US Power Industry



OUR STORY: ProgUSA LLC is a unique American company providing premium diagnostic Test equipment for many application areas within the US electric power industry. ProgUSA provides a sales, support and service network across the entire USA for select high quality manufacturers originating outside USA. We focus on tools that are more advanced on diagnostic technology and have excellent value, and continuously offer education on such diagnostics. Since 2005



CC7HD



Zoom on corona blob

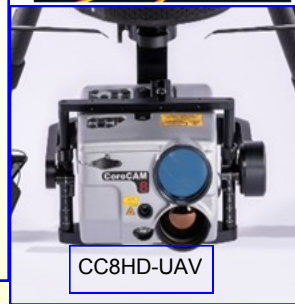
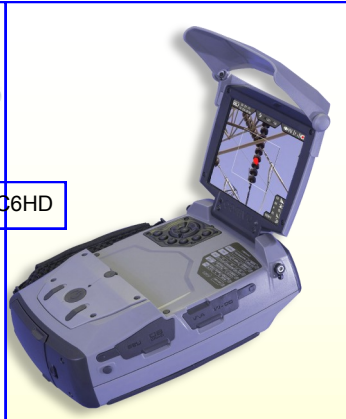
CC8HD



**CoroCAM Hi-Performance corona imagers** with new CC6HD for clear UV and visual overlays like CC7HD model. CC8HD model adds hi-res **thermal** images. Synchronized UV & Visible Zoom from 1x up to 4x, High sensitivity detector, which detects ultra-low UVc emissions to show the smallest corona discharges. Wide angle viewing, Fast 6 sec boot. Wide dynamic range, Best IFOV, UV Gain, threshold or integration can be set to optimize the resulting image. Flexible display with sunshield for best daytime viewing, 4.5 hour batt life (locally available batts). GPS std. Bluetooth and SDRAM



CC6HD



CC8HD-UAV



**Drones sold by ProgUSA** are USA made and are ideal for imaging surveys and carrying UViRCO cameras or other payloads up to 5.5lbs. Typical models can have flight time up to 40 minutes, and have integrated power supply, gimbal mounts and controllers. The revolutionary UViRCO model UVs1 with HD corona imaging shown here weighs a mere 1.6 lbs, plus gimbal mount and measures 4.3" W x 2.7" H x 5.3" D.



UVs1

**SERVICE:** ProgUSA realizes that US customers want to be sure that there is USA based service available for their instruments. ProgUSA has a basic service shop in our Orlando office and a nearby full service repair and NIST calibration shop. In the rare case that the test set needs to be returned to the factory, ProgUSA handles all export & import papers to simplify ownership for the test set owner.

**TRAINING:** Certain test sets use can be optimized if the end-user gets proper training. ProgUSA has specialists on hand to offer such training for the more complicated diagnostic equipment. In some cases it is an on-customer-site session or web-based inter-active training and in other cases it is a regional seminar style. [www.progusa.net](http://www.progusa.net) with offices in Orlando (HQ and Service Center), Los Angeles, Dallas, Atlanta, Chicago, & Pittsburgh.

HQ: 356 Harbour Isle Way, Longwood (Orlando), FL. 32750 Tel 407 332 8678 Fax: 407 332 8894 [info@progusa.net](mailto:info@progusa.net)  
Tech Center: 311 Altamonte Commerce Blvd, Unit 1618, Altamonte Springs, FL. 32712