

WISPRSM

Power to the Pro



WISPR RANGER PRO SERIES

Commercial Unmanned Aircraft Systems
Made in the U.S.A.

■ Propulsion System

WISPR Ranger Pro Series utilizes 465KV motors combined with 18.5" carbon fiber propellers and the 22.8V 6S 25,000mAh battery for superior aerial performance.

- Max payload of 7 lbs and in winds of 50MPH+
- Built-in cooling system maintains optimum temperature for the speed controller/electronics
- Flight Time of 18-33 minutes depending on the payload

■ Payload Configurations

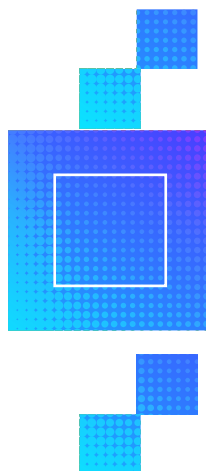
WISPR UAS have the following I/O ports that allow us to communicate, control, and stream live video feeds from the payload

- 2 - HDMI Port
- 24V Power port
- SBUS I/O Ports
- Serial I/O Ports
- PWM I/O Ports
- Single gimbal payloads
- Dual gimbal payloads

■ Compactible Frame Design



WISPRSM
Power to the Pro



Sold in USA by

PROG USA LLC

311 Altamonte Commerce Blvd, Unit 1618
Altamonte Springs, FL 32714

(407) 332 8678

www.progusa.net

■ Object Avoidance

The WISPR Ranger Pro Series has two options for collision avoidance: (1) Front collision avoidance available on the WISPR Ranger Pro 1000 and (2) 360 degree collision avoidance available on the WISPR Ranger Pro 1100. The collision avoidance system is LiDAR range finder in based and will work in day or nighttime conditions.

■ Position Stability

The WISPR Ranger Pro Series is equipped with a Global Navigation Satellite System (GNSS) receiver compatible with Real Time Kinetics (RTK) GNSS systems. It utilizes a LiDAR range finder for altitude accuracy and vertical stability while flying. To ensure the drone has redundancy in the critical sensors needed for flight, WISPR integrates 2 magnetometers, 2 accelerometers, 2 gyro, and 2 barometers. Lastly, a battery current and voltage sensor is used to track battery level. Together these sensors keep the WISPR Ranger Pro Series safe during flight!

■ UAS Hardware Monitoring

WISPR's UAS capture telemetry flight log tracks every single aspect of the UAS rectifying problems before they happen. The data captured allows proper maintenance/repair of your UAS in due course.



Specifications

WISPR Ranger Pro Series



Maximum Sustainable Payload	7 lbs.
Max Flight Time	18-33 minutes depending on payload
Max Wind Rating	50MPH+ - Tested
Collision Avoidance	Omni-Directional collision avoidance
RTK Availability?	Yes
PPK Availability?	Yes
Diagonal Wheelbase	42" without propellers 21" without propellers folded
Height	15" without landing gear 28" with landing gear
Width	20" folded 29" unfolded
Weight	12 lb.
Max Takeoff weight	25 lb.
Max Speed	50 MPH
Max Operating Temperature	122° F
Min Operating Temperature	-4° F
Frame material	Carbon Fiber
Battery Requirement	1 x 6S, 25000mAh, 22.8V LiHV
Battery Weight	5.7 lb.
Propeller Size	18.5" x 6.3 folding carbon fiber propellers pair, balanced
24V power port?	Yes
HDMI I/O port?	Yes
Serial I/O port?	Yes
PWM I/O port?	Yes
SBUS I/O port?	Yes
Orientation LED light colors	Red, White, Blue
Flight controller	CubePilot Blue H7
Flight controller firmware?	Open Sourced (ArduPilot)
Frame Type	Quad Copter
Made in America?	Yes
NDAA Compliant?	Yes

WISPRSM
Power to the Pro



CoroCAM[®] UVS1
 Specialist UAV Corona Camera
 With Optional Thermal
 Module



CoroCAM[®] 8HD UAV
 Combined LWIR, Solar Blind UV Corona and
 HD Visible Camera for UV Applications



Sold in USA by



311 Altamonte Commerce Blvd, Unit 1618
 Altamonte Springs, FL 32714

(407)3328678 www.progusa.net