



Download
Brochure



MV, HV, EHV Circuit Breaker Testing

Our state-of-the-art test equipment from DV Power supports a wide range of critical testing applications for Medium Voltage (MV), High Voltage (HV), and Extra-High Voltage (EHV) circuit breakers.

Power Transformer Test Equipment

From advanced Turns Ratio test sets to dynamic OLTC graphic test sets, our test equipment from DV Power ensure unparalleled accuracy and efficiency in transformer maintenance and analysis. Hipotronics historical, yet modern HiPot's & transfo oil dielectric tester.

SF6 Gas Quality Testing & Treatment

SF6 gas testing, handling, and purifying with our cutting-edge solutions from Enervac and RH Systems set the standard for precision and efficiency. Synecom adds lower cost analyzer and on-line SF6 treatment, and high accuracy sniffer.

Battery Bank Testing

Ensure that you can conduct thorough and accurate assessments, complying with NERC standards and optimizing the performance and longevity of your battery banks.

Substation Reliability: Ground Grid, CT/PT, Apparatus and Power Quality Monitoring

Backed by local US support and repair services, maximize your substation's performance and reliability with our testing and survey equipment, tailored to meet the demands of modern power systems.

HD Corona Cameras & Infra Red HD Cameras

CoroCAM by UVIRCO Technologies offer unmatched precision in detecting corona discharge in substations, transmission lines, and insulators. FOTRIC offers superior IR imaging with advanced software.

Sales

Unparalleled Precision
Equipment and Solutions

Calibration

Ensuring Accuracy
and Compliance

Repair

Expert Technicians for
Optical Performance

Training

Empowering Through
Knowledge and Skills

MV, HV, EHV Circuit Breaker Testing for Timing & Travel, Micro-ohmmeter for contacts ("Ductor") and bus joints. Now with dynamic resistance and First Trip ability. CB Coil testing and CB power for commissioning.

Lightweight Portable micro-ohmmeters,
TRUE ripple-free DC, Lightweight cables, 100A to 800A versions. RMO-200G most popular in US.

Both Sides Grounded safety feature!

New 300A version for US standard **Ground Grid integrity** test.

Test CB's when no DC available. **Power Supply** for CB Coil Testing for low DC Volt operability and CB commissioning. POB40AD.

SAT40A also Measures coil resistance and interfaces with CAT software for flexible situation testing.



New! RMO-H22 low cost (<\$7K) **handheld micro-ohmmeter.** Up to 300 AMPS TRUE DC, ripple free current. Battery powered. Uses hi-energy Li-Po technology, weighs 2 lbs. Leads up to 33ft.



DV Power advances **portable test for CB's.** CAT-H handheld 3ph CB timer w coil control built-in, **off-line test.** CAT-P model adds First Trip **on-line test.** Both lightweight with clear useful displays and archiving PC software. DV-Win.

DV/power

All DV Power products carry a 3 year warranty and are serviced in Florida

MV, HV, EHV Circuit Breaker Testing



CAT100 w 8 hr. battery

CAT series of low cost **Breaker timing/motion analyzers.** 3, 6 or 12 timing ch.

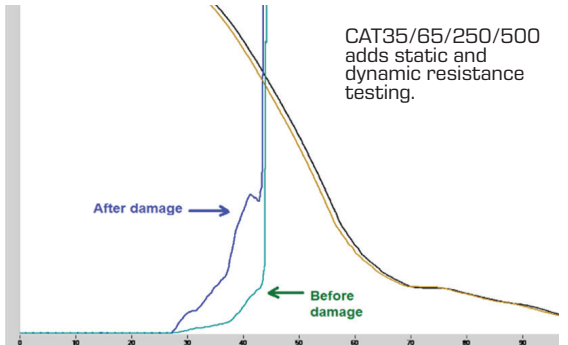
Models from \$13K to \$35K

CAT hi-performance series add **DRM** ability and higher channel count. Both Sides Grounded test option. Built-in 200A Micro-ohmmeter on some models.

Pre-insertion resistor (PIR) measure and graph.

GIS and AIS versions available now!

Free PC software and free upgrades.



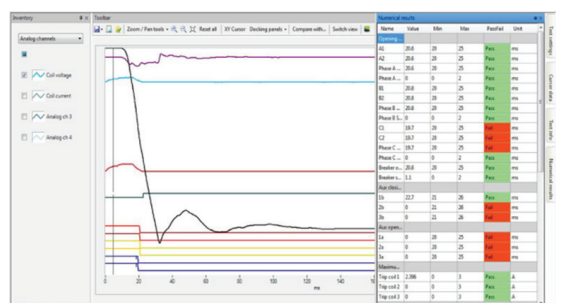
CAT35/65/250/500 adds static and dynamic resistance testing.



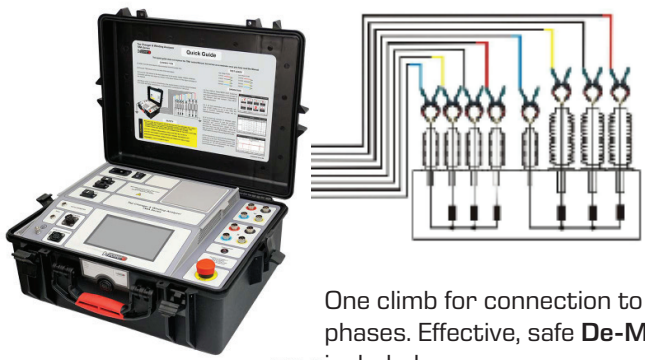
CAT500 is most advanced



CAT250 w 10" display. Printer option

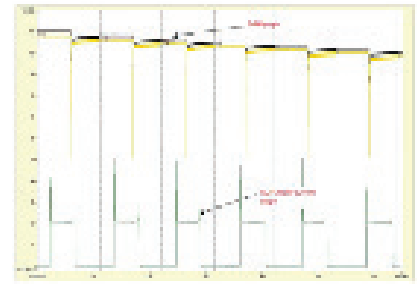
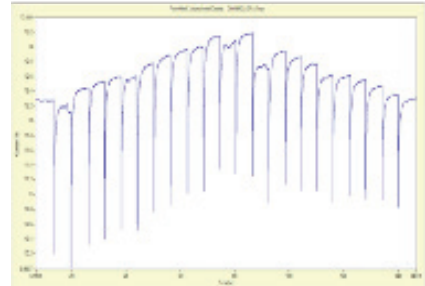


Sample of full timing/motion capture with pass/fail limits. Save as pdf, .xlsx, or .docx



One climb for connection to all six phases. Effective, safe **De-Mag** included.

DV Power's newest Diagnostic tester (**TWA-400**) for 3 phase fast **winding resistance** test, 7" display, inter-active **graphic dynamic OLTC test** (aka **LTC-DRM**) and **Auto-Demag** function. TRUE 3 phase source for convenient and simultaneous H and L side testing, an industry first!!! Same leads can be used for TRT63A or TRT400 for true 3 phase TTR measurements on same transformer. New **auto-tap-step** feature! Lower cost model **TWA-25A** available as best six phase Winding Resistance Tester in US market.



Transformer **TTR** for **true 3 phase** turns ratio testing. Fully automatic, measures turns ratio, phase shift, excitation current and auto-detects vector groups to verify nameplate vs windings. Three phase generate and three phase measure. PC software incl. Displays accurate phase readings, other TTR's cannot. Same cable set as TWA-400 for convenient 3 phase testing.

TRT400 has 1, 8, 40, 100, 250, 430 VAC ranges for CT thru to largest power transformers. **Auto-tap-step** control/measure thru OLTC taps lets PC do the work.



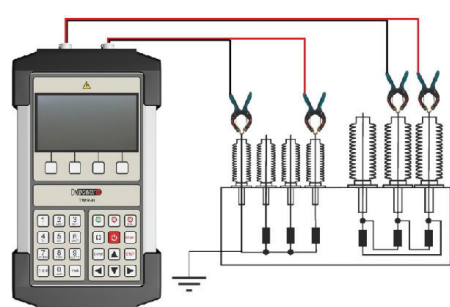
Top of the Line... TWA500 and TRT500



All DV Power products carry a 3 year warranty and are serviced in Florida

Power Transformer Testing Equipment

Turns Ratio and Winding Resistance Analyzer TWR-250B is a new three-phase combo, fully automatic tester, specially designed for winding resistance, OLTC DV test (DRM), demag, turns ratio, phase shift and excitation current measurements on power transformers. Max 250VAC, 25A



TWR-H unique handheld instrument. Measures turns ratio, winding resistance of a single phase then does demagnetization. TRT up to 40VAC. WRT with 10A for LV side and 2A for HV side.



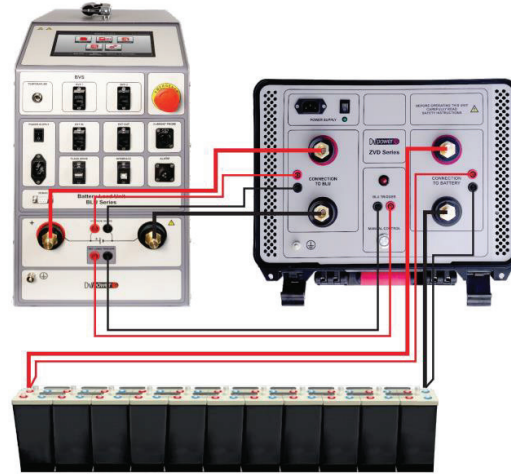
DEM-60R Stand-alone 3 phase Automatic One-Touch **De-Magnetizer** for any size Power Transformers. SAFE. SIMPLE. Auto-step-down method ensures full de-mag. Measures core flux (new!).

TEST those substation battery banks without damaging them! Simple voltage monitor with constant current load-test competency, via discharge testing with auto-scanning. BE ready for NERC and ensure that last line of defense, "DC" for control, is still intact. Flooded, VRLA, NiCad or Li ION applications.

DV Power **DC loads** BLU and BLU-T series 0.9-500 VDC, over 42 KW input on some models. Settable limits for low volt level, A-H accumulated or time expiry. Graph report. <32 lbs. aka 'capacity test'.



BAC25, DC **Battery Charger** to augment the permanent battery charger to speed up bank recharge times and reduce wait time to full back-up energy.



New ZVD-80 for full discharge to 0V then shorted, for Battery recycling.



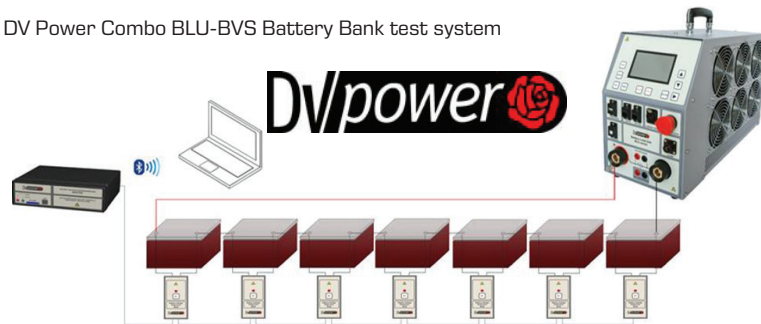
DV Power's BVR-22 for manual cell by cell testing. Use as routine bank **voltage test** or alongside BLU during capacity test to identify the weak cells.



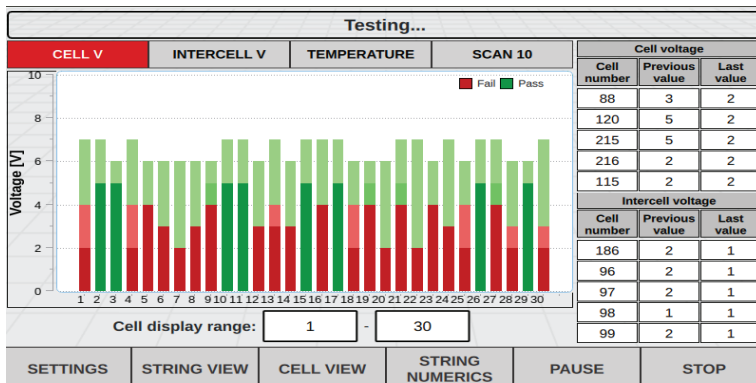
Battery Bank Test Equipment

All DV Power products carry a 3 year warranty and are serviced in Florida

DV Power Combo BLU-BVS Battery Bank test system



BVS **cell by cell scanner** system can be used with DV Power BLU loads or as stand alone monitor or with other suppliers loads. New firmware permits proper analysis of even NiCad energy dissipation. **New quad** cell modules reduce cost by over 35% and reduces cabling.



Advanced BLU C series of electronic DC loads. Large 7" display, option to drain battery down to 0V prior to recycling w ZVD-80 accessory.

'No crouch' form factor. Integral cell by cell scanner control, no PC required. Models up to 1300VDC and 42KW. Under 46lbs.

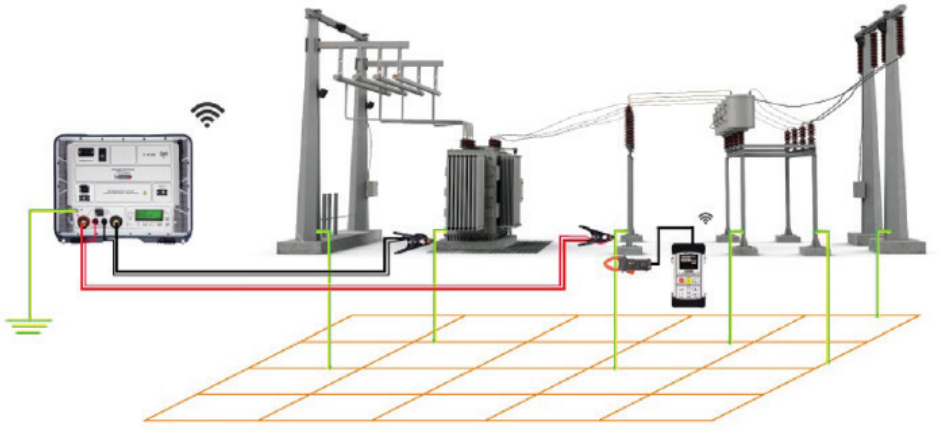


CVA500 CT/PT/CVT Test Set

Multi-tap (up to 5 taps) CT tester with built-in tap interface. Up to 2KV output to secondary of CT. Turns ratio, polarity, excitation current, phase angle and auto CT knee point (IEEE 30 deg. and 45 Deg.)

Winding resistance (up to 6A DC), insulation resistance, Burden w ACV or ACI, Demagnetization when all tests done. **Auto tests sequence** and Flexible test reports and **free PC software**.

Test substation **GROUND GRID integrity** with this specially modified 300AMP micro-ohmmeter. DV Power model GGT300 was developed in conjunction with a USA utility to provide portable, rugged test set to follow this accepted effective procedure. Finds defective grid points due to corrosion, vibration, bad cable welds, loose clamps or poor apparatus ground connection leads. GGT200 also available. One or two operator versions.



**Substation Reliability
Power Quality
Monitoring**

CHK Power Quality offers Portable Power Quality Analyzers that are high precision, weatherproof, and offer comprehensive power quality measurements, including Voltage Sags, Swells, Interruptions, Flicker, Temperature, Frequency, Power, Energy and Ground voltages.

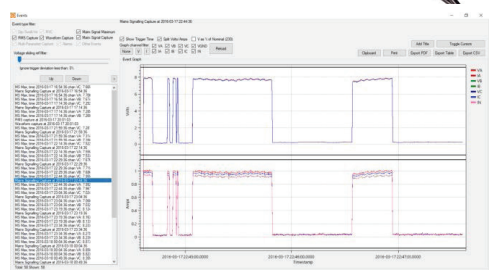
The MIRO PQ-45 portable power analyzer product is flagship Class A model with key features:

1. Easy to set up and starts recording immediately.
2. Weatherproof NMEA 4X for mounting outdoors to monitor power feeds to buildings or facilities.
3. CITRUS PC software for easy analysis and report generation, and we mean EASY.
4. 3G/4G Cellular for remote data collection or Wi-Fi for local data collection on PC or on phone
5. Longer recording periods than smart relays; better troubleshooting

Benefits of Portable Power Quality Analyzers

- Increased Efficiency in Troubleshooting** - Accurately diagnosing power quality issues to quickly identify and rectify problems, minimizing downtime and maximizing productivity.
- Cost Savings** - Early detection of power quality issues can prevent costly equipment failures and repairs.
- Compliance with Regulations** - Ensures compliance with industry standards, avoiding potential penalties and legal issues.

NEW!!!! Miro-F Series of Transformer Monitors and Loggers. By continuously assessing temperature, harmonics, and operating conditions, the Miro TxM-F calculates the impact these factors have on the transformer's expected lifespan.



Transformer Oil Purifier / Degasification (E865A)



ENERVAC's (transformer oil purifier) high vacuum process is used for the dehydration and degasification of electrical insulating liquids including transformer oils, polybutene and silicone fluids, to increase and maintain their dielectric strength. Mobile and stationary units are available in sizes 50 to 6000 GPH (190 to 23,000 l/h). The typical performance in a single pass through an Enervac vacuum system is as follows:

- Dehydration—Water removal is from 100 ppm to less than 10 ppm.
- Degasification—From full saturation of ~12% to less than 0.25%.
- Particulates— Removal of particulate to a nominal 5-microns.
- Other contaminants such as products of oil oxidation, thermal degradation, dissolved varnishes, paints and acids can be removed by the addition of Fullers Earth filters to the system.



Transformer Oil De-Gassing & Drying

EnerDry for Transformer oil, is a temporary cost-effective solution to reduce moisture in power transformers while a full re-build or replacement is planned.



Mini-dehydrator / degas oil up to 60 GPH. Priced approx. \$24K.

ENERVAC has built a world-wide reputation for delivering high-performance engineered products that meet or exceed customer needs.



Transformer Degassing & Drying



Sonel Test Solutions

Insulation Resistance – Megohmmeters - MIC Series

1 kV handhelds, 5kV,10kV, and 15kV units available up to 20 T ohm. Excellent interference protection, safety features and value for testing for electric shock protection in AC power networks and apparatus



Power Quality Analyzers - PQM Series

Multiple PQ parameters : V, I, Inrush current, Harmonics, Power factor, Active, reactive, and apparent power and distortion, etc. 7" color graphic display, battery powered, years of recording. Compliance with class S parameters of IEC 61000-4-30

Multi-Function Testers – MPI Series

PQ Parameters as above plus nsulation Test 1kV, Low Resistance Measurement, Ground Test and Power Analyzer in 1 Small Test Set, Photovoltaic option



Ground Testers 3P, 4P, Clamp-on MRU 30 – very small and inexpensive
MRU 200 GPS - best accuracy on market
For earthing as well as soil resistance test



The **Hipotronics** range of Hipot testers provide modern solutions for AC and DC testing in the lab or field.

* Rugged, portable Hipot testers feature automated test capabilities to improve test time and accuracy.

Models 840PL-HD (40kV) 880PL-HD (80kV) **DC** outputs voltage and current to test **insulation strength** of electrical apparatus.

* Multiple measurements including output voltage, leakage current, insulation resistance (IR), and polarization index (PI)

OC60-DI **Liquid dielectric tester** up to 60kV **AC**, rugged, reliable and portable.

* Test cells available for ASTM D877 and ASTM DD1816 . 7" digital color display screen.

* Automatic breakdown detection within 4 usec of breakdown point. 90kV version also available.

HVT-DI series, **AC Hipot testers** – 30kV, 60kV and 100kV for bucket trucks, aerial platforms, vacuum interrupters, breakers, and switchgear

* Lightweight, rugged design and 7" digital color display.

New! 60 HVTX-DI 60 KV, 30 mA integral step-up transformer

* One Box Solution - 97lbs - sharp 7" touchscreen - auto or manual modes

LCM-W Bucket Truck Leakage Current Meter **w/Loud Alarm**

Live leakage current measurements, 5" screen, store results, accurate current measurement. Mobile App. Share results via BLE or CANopen.



HIPOTRONICS

WAVECONTROL

AC or DC For Insulation Test

EMF Testing

SMP3 - Electromagnetic Field (EMF) Meter

Field Strength Meter. SMP3 meter is a fully compliant and flexible solution capable of measuring from DC up to 60 GHz for Electric and magnetic fields. It is a multi-standard device designed to offer maximum flexibility with a simplified use.

SMP3 Probes

In addition to power industry focus on 60 Hz magnetic radiation measurements, Wavecontrol provides a versatile selection of high-performance IEEE compliant probes designed for use with their SMP3 electromagnetic field (EMF) meter, enabling precise measurement across diverse frequency ranges and field types.



WP400
(1 Hz – 400 kHz, Broadband and FFT)



WP10M
(1 Hz – 10 MHz, Broadband and FFT)



WPH-DC
(0 Hz – 40 kHz, Broadband and FFT)

RH 973-SF6 analyzer or SF6 purity and **ultra-accurate** dewpoint (moisture content) via chilled mirror technology, plus SO2 plus convenient **recovery and pumpback of test sample**. Minimizes user frustration getting stable, repeatable readings which can save the sf6 gas owner big money. AC or batt. Universal and custom **fittings kits** available for testing or filling. **Supported 100% by RH in Arizona**

RH systems



Why RH Systems?

1. Most accurate and repeatable sf6 analyzer on the market = fewer mistakes in interpreting gas parameters' (aka The Argument Settler)
2. Fully automatic , in that, press start and it determines the amount of time get a good stable reading, and its usually takes 2 readings to get there, maybe 3. Four displayed parameters, easy to read.
3. Best priced and fastest support for repair and cal, bar none, within USA by RH lab in Phoenix.
4. Highest cost to acquire but much lower cost of ownership. (ask for a cost justification calculator form we offer.)

Adapter kits for RH and others



RH systems



SF6 Gas Handling & Quality Testing



SF6 Gas Recovery, Filling and Drying

Enervac's **GRU-7** and **-8** are SF6 gas carts for recovery rates of 28 kg (62 lb.) 17cu.m. /hr & 40cu.m. /hr and are suitable for vacuum recovery, filling and drying of gas for up to **115KV and above** breakers. Particle removal filters included.



Model 736A, to the right, for maximum Sf6 cart performance up to 750KV use. Modern graphic HMI and flexible on-board storage. Trailer mount and skid mount versions for the most challenging customer needs



736A Hi-End SF6 Cart

GRU-4



The GRU-4 model above can store up to 55lbs of gas in on board tank and recover and return 99.6% (optionally 99.9%) of SF6 for up to 69KV breakers. Easily moved with pneumatic tires.



ALY101-05 SF6 ANALYSER

- Up to 3 different measurable parameters to verify the purity of the gas according to the CEI EN 60480: SF6 SO2 and dew-point
- Accurate and quick analysis. Downloadable data on USB stick
- No SF6 gas leaks w/closed-loop system
- Flexible bag for gas storage
- Internal rechargeable battery
- Gas can be returned to the compartment through the pump-back function

ALY101-05-S Ultra Portable 3 in 1 SF6 Analyser

- 45% of size of current ALY-101-05 and only 32 pounds
- Effortless Maintenance: quick and easy plug-and-play sensor replacement. Performable independently on-site, with no need to return the unit to the manufacturer.
- Flexible: no built-in battery. Use your own power bank for on-site operations, making the analyser completely airline-friendly for international travel.
- Smart: seamlessly monitor and control your analyses via your smartphone or tablet



Various size gas recovery and treatment SF6 carts

SF6 Gas Test, Recovery, and Treatment

SF6 Leak Detector

- * Ideal for detection and exact quantification of leaks in equipment containing SF6 gas
- * Precise localization of the leak where the SF6 concentration in the air is higher
- * Quantify the exact amount of SF6 leak in ppmv on the display
- * Audible and visual alarms with easy to read display, high sensitivity, easy to clean/change dust filter

Approx \$8K



CAR101-01



"ACTIVE" Car 108-01

Unique innovative ACTIVE system being ideal for: full Recycling of SF6 gas contained in all equipment sizes. Equipment under test can be in live operation.

- Designed to Dehumidify, Dedust and Eliminate the acid substances
- Full gas Recycle according to standards both when the plant is operating and while shut down
- Plug & Play filter substitution

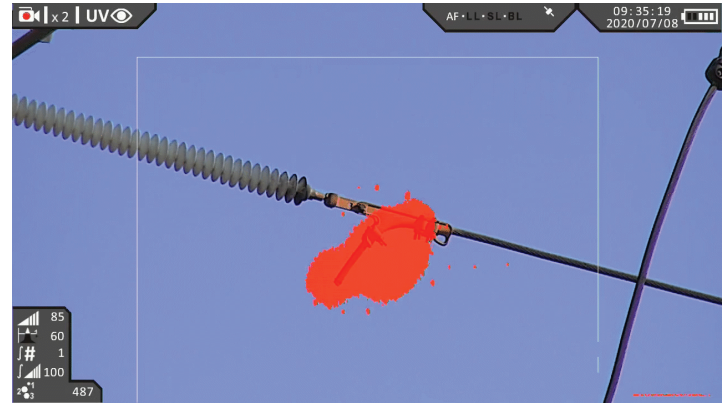
Various size gas recovery and treatment SF6 carts : Air Vacuum, Recovery, Refill and Filtering of SF6 gas, also simultaneous mode operation.

CoroCAM Hi-Performance Corona Imagers with new CC6HD for clear UV and visual overlays like CC7HD model. CC8HD model adds hi-res **thermal images**. Synchronized UV & Visible Zoom from 1x up to 4x, High sensitivity detector, which detects ultra-low UVc emissions to show the smallest corona discharges. Wide angle viewing, Fast 6 sec boot. Wide dynamic range, Best IFOV, UV Gain, threshold or integration can be set to optimize the resulting image. Flexible display with sunshield for best daytime viewing, 4.5 hour batt life (locally available batts). GPS, Bluetooth and SDRAM std.



CC7HD

CC8HD



Zoom on corona blob



Portable Corona Imagers with Thermal Options

Designed for modern professional drone integration, the revolutionary UViRCO model UVs1 with HD corona imaging shown here weighs a mere 1.6 lbs, plus gimbal mount and measures 4.3" W x 2.7" H x 5.3" D. UVs1+1 model adds thermal imaging as well. Taking advantage of "co-location" of VIS,UV and IR.

CC6HD



CC7HD



UVs1



CC8HD-UAV



FOTRIC P-series **Industrial thermal imagers** offers up to 1280 x 1024 IR Resolutions, exceptional image quality, and precision for inspection work. With an optional Dual-view Lens, you won't need to carry or change lenses, saving time and space. The P-series cameras boast top-class performance with <30mk Thermal Sensitivity.

Up to 1280 x 1024 IR resolution. Covers 100% sRGB colors. Compelling image quality with Thermal White Balance and IRedge imaging algorithm. 13 MP digital optical camera for dynamic visual image quality.

Interchangeable lens on a 40-level rotary axis, provides the finest flexibility as well as stability. Common dual Field of view 25 deg and 7 deg telephoto lens or individual FOV lenses. P7 model ideal for electrical apparatus viewing with sharp 640 x 480 IR resolution view, 5" display and 128 GB SD memory card. Two year warranty with service in Santa Clara, CA.

Powerful software- NaviTR for revolutionizing routine inspections. And Object identification and automatic diagnosis using AI.

New and unique combo model RP7R1H camera with RP7 IR and visual features **plus** adds a 162 microphone **ACOUSTIC image function** to 'listen' for sounds in 2KHz to 100KHz spectrum. Basic indication of electric Partial Discharge or other mechanical phenomena.



FOTRIC RP7R1

FOTRIC

Defect detection, condition monitoring, and safety assurance

Premium Thermal HD Cameras for Industrial Safety Applications




Comprehensive Thermal Analysis Options

Utilizing suitable image analysis and reporting software can have a transformative impact on your business. It simplifies problem understanding for customers and instills trust in the effectiveness of your solutions.

FOTRIC NaviTiR System is an **AI-infused** digital upgrade from the traditional thermal camera. It perfectly assists thermal inspectors on every link of their assignment, from preparation to presentation.

FOTRIC IRExplorer is a powerful cross-platform Analysis System that enables remote access and control of FOTRIC thermal cameras through a web browser on various devices, including Mac, Windows, ios, Android, and Linux via WiFi.

FOTRIC AnalyzIR is a comprehensive analysis software designed to optimize thermal analysis and reporting processes to enhance inspections' efficiency and accuracy.

 ProgUSA LLC
311 Altamonte Commerce Blvd, Unit 1618
Altamonte Springs, FL. 32714

 407-332-8678  progusa.net



More Than a Test Equipment Sales Company

Our Story

ProgUSA LLC is a unique American company providing premium diagnostic Test equipment for many application areas within the US electric power industry.

ProgUSA provides a sales, support and service network across the entire USA for select high quality manufacturers originating outside USA. We focus on tools that are more advanced on diagnostic technology and have excellent value, and continuously offer education on such diagnostics. Since 2005.

Sales

We strive to make every interaction smooth, enjoyable, and beneficial for your unique needs while ensuring that every purchase enhances your operational efficiency and accuracy.

Calibration

Using cutting-edge technology and methods, our calibration services keep diagnostic equipment precise and accurate to government-regulated standards.

Repair

Our expert technicians can diagnose and repair many diagnostic instruments, minimizing customer downtime and assure top performance for important applications.

Training

We have specialists for on-customer-site session or web-based interactive training on the more complicated diagnostic equipment.



Power Transformer Test & Oil Purify

HiPot Test & Oil Dielectric Test

Circuit Breaker Test
& SF6 Gas Testing & Treatment

Battery Bank Test

Substation Test, Survey
and EMF / 60 Hz
Monitoring

CT/PT/CVT Test

Portable Corona & Thermal
Imagers

